



PGY2 Emergency Medicine Pharmacy Residency Program

Program Description

The PGY2 specialty residency in Emergency Medicine (EM) Pharmacy Practice at Huntington Hospital is a 12-month post-graduate intensive training program that will prepare the resident to provide advanced clinical pharmacy services in an emergency department (ED). The EM resident will learn to provide direct consultative and bedside care for critically ill patients and manage urgent pharmacotherapeutic, toxicologic, and drug-related problems in the emergency department. The program is designed to provide the resident flexibility to tailor the residency towards his or her specific goals and interests.

Residency Activities

The resident will be involved in clinical, administrative, and teaching activities throughout the year including participation in interdisciplinary committees such as pharmacy and therapeutics, trauma, stroke, emergency preparedness, and medication safety. The resident will serve as a preceptor for pharmacy students and PGY1 residents throughout the year. Longitudinal ED-related projects will be completed, including but not limited to original research and quality improvement initiatives. The resident will be provided opportunities to attend regional and national pharmacy and emergency medicine conferences to supplement their learning. The resident must be able and willing to work a flexible schedule including evening and weekend shifts.

Learning Experiences

The resident will spend 7 months in an advanced ED rotation and the remaining months in core learning experiences in the following areas: Critical Care/Trauma, Pediatrics/NICU, Infectious Diseases, and Administration. Other elective experiences at Huntington Hospital include: Emergency Medical Services/Pre-Hospital Care, Medicine, Cardiology, Oncology, Nephrology, and Ambulatory Care. The resident will have the opportunity to obtain certifications in Advanced Cardiac Life Support (ACLS/BLS), Pediatric Advanced Life Support (PALS) and respond to cardiac / respiratory arrests, and other interdisciplinary code activations (Trauma, Stroke, STEMI).

The overall goal of the residency will be to develop strong and competent EM clinical pharmacist specialists with the skills necessary for independent pharmacy practice. The Huntington Hospital pharmacy residency programs are designed to give residents optimum independence in a supportive, state-of-the-art environment, allowing self-structuring and flexibility for highly motivated individuals.



Huntington Hospital Profile

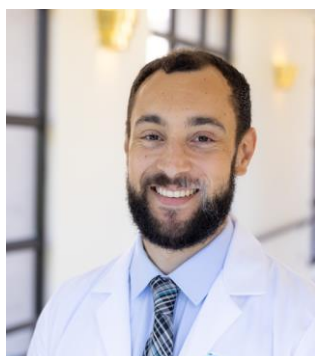
Huntington Hospital is a 636-bed, non-profit, community hospital dedicated to providing full service medical care to the San Gabriel Valley communities. The 56-bed emergency department (ED) and Level II Trauma Center handles over 70,000 visits annually. The emergency department serves as a paramedic base station for Pasadena and carries the Los Angeles County designation for pediatric emergency care and ST-Elevation Myocardial Infarction (STEMI) receiving center, the American Heart Association designation for care of cardiac emergencies, and The Joint Commission Comprehensive Stroke Center designation. In addition, Huntington Hospital is the only trauma center serving the San Gabriel Valley.

The pharmacy department at Huntington Hospital offers 24-hour services. With over 30 clinical pharmacists on staff, pharmaceutical care is provided in a wide variety of areas including Emergency Medicine, Pediatrics / Neonatology, Critical Care, General Medicine, General Surgery, Infectious Diseases, Hematology / Oncology, and an Ambulatory Medication Therapy Management Clinic. The pharmacy department is a teaching affiliate of the University of Southern California and Western University of Health Sciences College.



"The PGY2 EM Pharmacy Residency Program provides opportunities to serve a diverse patient population, educate learners of all levels, and collaborate with a dynamic ED team. From day one, I was immersed in a stimulating learning environment cultivated by preceptors who continually support my personal growth and challenge me to apply evidence-based medicine. I am confident that these experiences will equip me with the necessary skills to handle future challenges as an EM pharmacist."

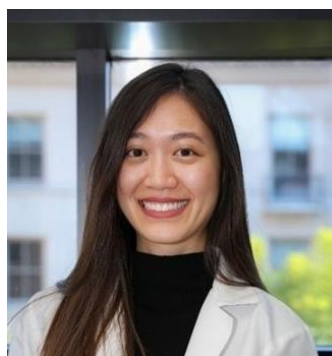
Christine Vo, PharmD, PGY2 EM Pharmacy Resident (2023-2024)



Residency Program Director
Evan Adintori, PharmD. BCPS



Pharmacist Preceptor
Kirk Nielsen, PharmD



Pharmacist Preceptor
Christine Lee, PharmD



Pharmacist Preceptor
Jeremie Aviado, PharmD

For more information on how to apply please email:
HHEDPharmacist@huntingtonhealth.org

